

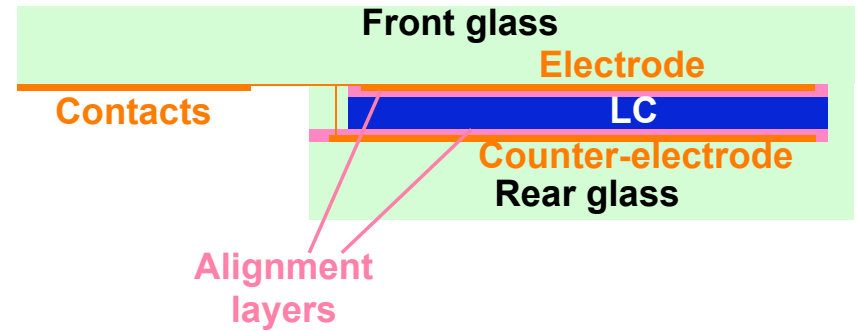
# LCD

## Liquid Crystal Display

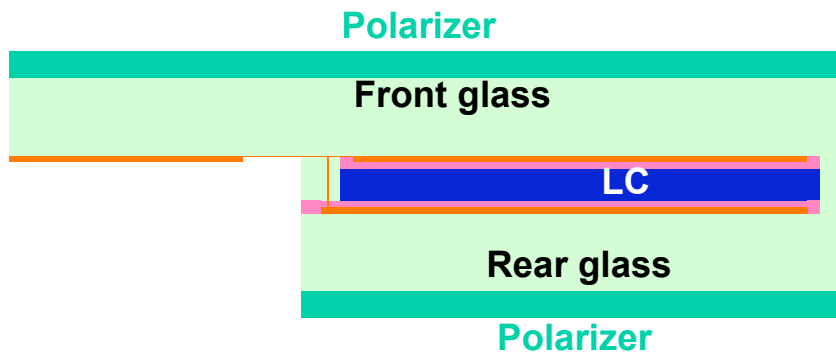
## Flüssigkristallanzeige

Thierry Chuard, Universität Bern

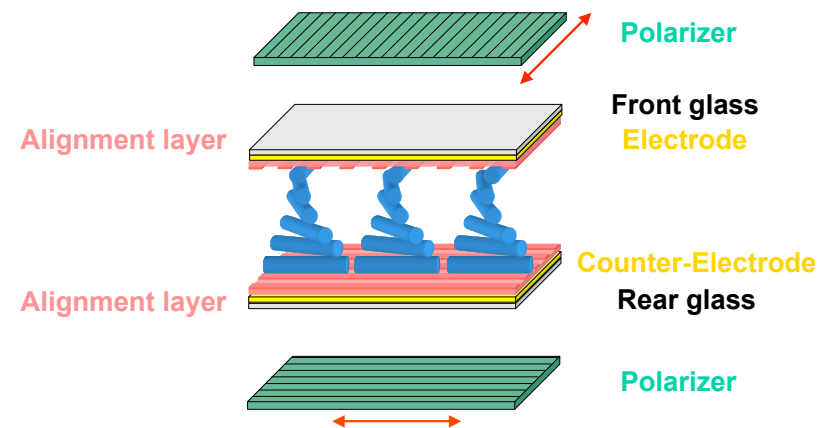
### Twisted nematic (TN) cell

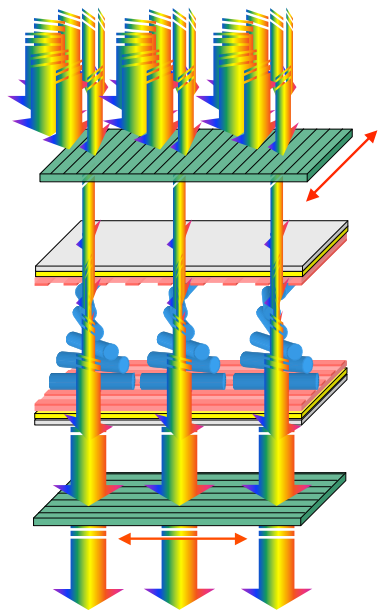


### Twisted nematic (TN) cell



### TN cells switching

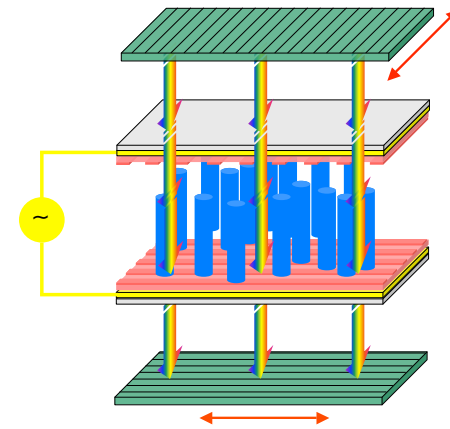




Only the polarized Light in the plane of the polarizer goes through

The plane of the polarized light is turned by 90° by the LC

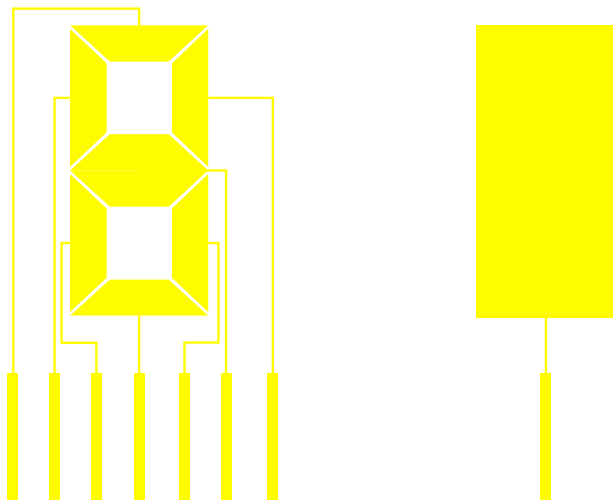
The light can go through the 2nd polarizer



The plane of the polarized light is not turned by the LC

The light cannot go through the 2nd polarizer

### ITO electrodes



### ITO electrodes

